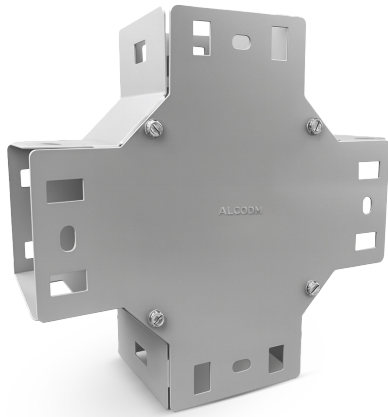


## UNIVERSAL X DUCT CONNECTION

10X10

Cable Tray  
Accessories



### FEATURES

- The construction ensures durability and an excellent appearance.
- Lightweight due to its construction.
- Black steel sheet with an electrostatic polyester powder-coated finish, previously degreased, phosphated, and sealed to provide high corrosion resistance.

### BENEFITS

- One-click connection with two self-tapping screws to improve security.

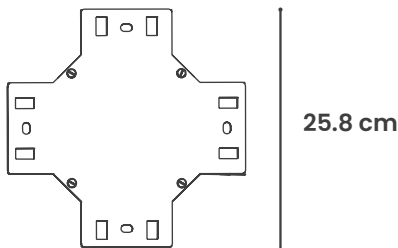
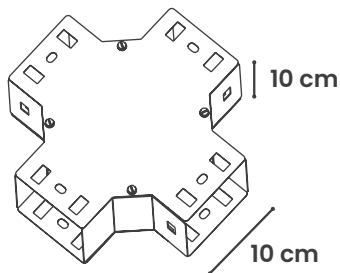
### APPLICATIONS

- It allows duct lines to be connected and branched off in three directions within an electrical installation.

### SPECIFICATIONS

MATERIAL DE FABRICACIÓN	CARBON STEEL
GAUGE	20
COLOR	ELECTRONIC GRAY
PAINT TYPE	SMOOTH HYBRID
PAINT APPLICATION	ELECTROSTATIC POWDER COATED AT 180°C
SCREWS INCLUDED	YES
NUMBER OF SCREWS	8 SELF-TAPPING
WEIGHT	1.80 KG

### ISOMETRIC



### CONFIGURATIONS

### CERTIFICATIONS

CODE	DESCRIPTION	H	W	L
4KDUEQACGA10	UNIVERSAL X DUCT CONNECTION GRAY 10X10	10	10	25.8



**HQ Manufacturing Facility**  
Gómez Palacio  
871 750 00 03, 79  
871 750 11 52, 62

**Guadalajara Branch**  
331 368 80 28  
333 162 08 75

**Monterrey Branch**  
818 191 99 91  
811 520 08 53

**Mérida Branch**  
999 445 62 12

**Chihuahua Sales Office**  
614 293 96 54

**Mexico City Sales Office**  
567 004 20 92

\*Specifications and dimensions are subject to change without notice. | Dimensions in cm

APRIL 2026