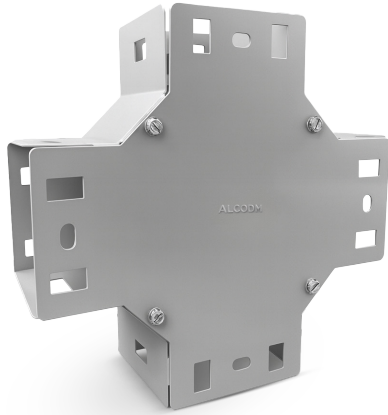


UNIVERSAL X DUCT CONNECTION

6.3X6.3

Cable Tray
Accessories



FEATURES

- The construction ensures durability and an excellent appearance.
- Lightweight due to its construction.
- Black steel sheet with an electrostatic polyester powder-coated finish, previously degreased, phosphated, and sealed to provide high corrosion resistance.

BENEFITS

- One-click connection with two self-tapping screws to improve security.

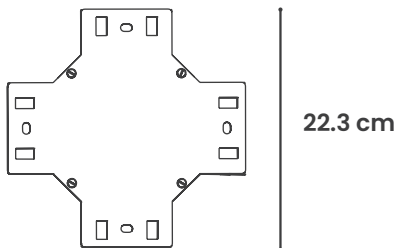
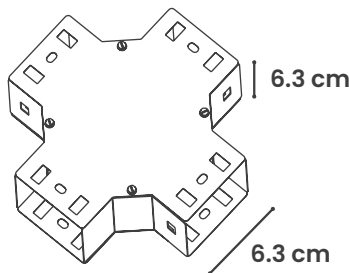
APPLICATIONS

- It allows duct lines to be connected and branched off in three directions within an electrical installation.

SPECIFICATIONS

MATERIAL DE FABRICACIÓN	CARBON STEEL
GAUGE	20
COLOR	ELECTRONIC GRAY
PAINT TYPE	SMOOTH HYBRID
PAINT APPLICATION	ELECTROSTATIC POWDER COATED AT 180°C
SCREWS INCLUDED	YES
NUMBER OF SCREWS	8 SELF-TAPPING
WEIGHT	1.6 KG

ISOMETRIC



CONFIGURATIONS

CERTIFICATIONS

CODE	DESCRIPTION	H	W	L
4KDUEQACGA63	UNIVERSAL X DUCT CONNECTION GRAY 6.3X6.3	6.3	6.3	22.3



HQ Manufacturing Facility
Gómez Palacio
871 750 00 03, 79
871 750 11 52, 62

Guadalajara Branch
331 368 80 28
333 162 08 75

Monterrey Branch
818 191 99 91
811 520 08 53

Mérida Branch
999 445 62 12

Chihuahua Sales Office
614 293 96 54

Mexico City Sales Office
567 004 20 92

*Specifications and dimensions are subject to change without notice. | Dimensions in cm

APRIL 2026