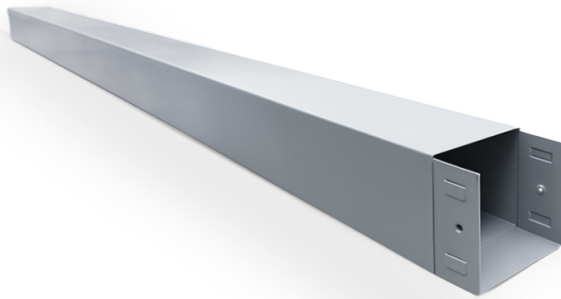


SQUARE DUCT

NON-HINGED GRAY 10X10X305

Cable Tray
Non-Hinged Square Duct



FEATURES

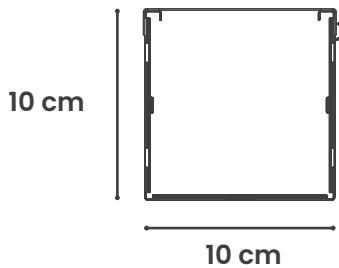
- A closed support system that protects electrical conductors from impacts, animals, chemicals, and other unwanted intrusions.
- Designed with a hinged system that makes it easy to open and close, allowing for faster, simpler, and more organized cable installation.
- Black steel sheet with an electrostatic polyester powder coating, treated through degreasing, phosphating, and sealing to provide high corrosion resistance.

APPLICATIONS

- Wiring of a distribution panel, circuit storage, etc.

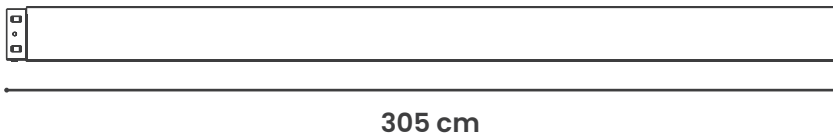


ISOMETRIC



SPECIFICATIONS

MATERIAL	CARBON STEEL
GAUGE	24
COLOR	ELECTRONIC GRAY
PAINT TYPE	SMOOTH HYBRID
PAINT APPLICATION	ELECTROSTATIC POWDER COATED AT 180°C
JOINT INCLUDED	YES
NUMBER OF JOINTS	1
NUMBER OF KNOCK OUTS	3 PER SIDE
NUMBER OF SCREWS	2 SELF-TAPPING
SCREW TYPE	GALVANIZED
WEIGHT	8.24 KG



CONFIGURATIONS

CERTIFICATIONS

CODE	DESCRIPTION	H	W	L
4KDUCUACGA10305	SQUARE DUCT NON-HINGED GRAY 10X10X305	10	10	305



HQ Manufacturing Facility
Gómez Palacio
871 750 00 03, 79
871 750 11 52, 62

Guadalajara Branch
331 368 80 28
333 162 08 75

Monterrey Branch
818 191 99 91
811 520 08 53

Mérida Branch
999 445 62 12

Chihuahua
Sales Office
614 293 96 54

Mexico City
Sales Office
567 004 20 92