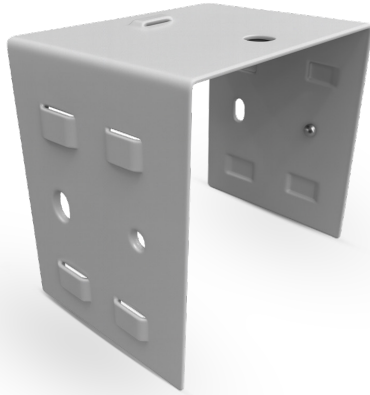


## DUCT CONNECTION JOINT

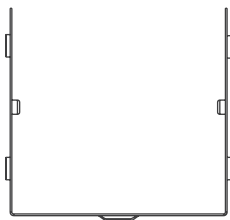
QUICK JOINT GRAY 10X10

### FEATURES

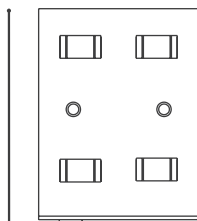
- Used to connect straight sections or duct fittings from Bticino trademark.
- Its construction ensures durability and an excellent appearance.
- The material this is made with offers greater resistance to corrosion.



### ISOMETRIC



9.3 cm



9.3 cm

7 cm

### SPECIFICATIONS

MATERIAL	CARBON STEEL
GAUGE	22
SCREWS INCLUDED	YES
NUMBER OF SCREWS	4 SELF-TAPPING
WEIGHT	0.13 KG

### CONFIGURATIONS

### CERTIFICATIONS

CODE	DESCRIPTION	H	W	L
4KDUEMACGA10R	DUCT CONNECTION JOINT QUICK JOINT GRAY 10X10	9.3	9.3	7



HQ Manufacturing Facility  
Gómez Palacio  
871 750 00 03, 79  
871 750 11 52, 62

Guadalajara Branch  
331 368 80 28  
333 162 08 75

Monterrey Branch  
818 191 99 91  
811 520 08 53

Mérida Branch  
999 445 62 12

Chihuahua  
Sales Office  
614 293 96 54

Mexico City  
Sales Office  
567 004 20 92

\*Specifications and dimensions are subject to change without notice. | Dimensions in cm

APRIL 2026